

Tree #17

Rhododendron Species



1. Condition - Excellent

2. Save or Remove - Save

a. If saved what is the treatment plan / pruning needs?

- a.** This cluster of rhododendrons seem to be doing just fine without much care. Periodically prune branches that might alter the uniformity of the planting.



Tree #18
Cluster of Norway Maple
Acer platanoides (invasive)



1. Condition - Good

2. Save or Remove - Remove

a. If cut, what is a good replacement and where should it go?

- a. This is listed by the State of New Hampshire as an invasive species so it should be removed. Unless there are plans to do a planting of trees along the West Shore Road side of the common there is no reason to replace these trees.



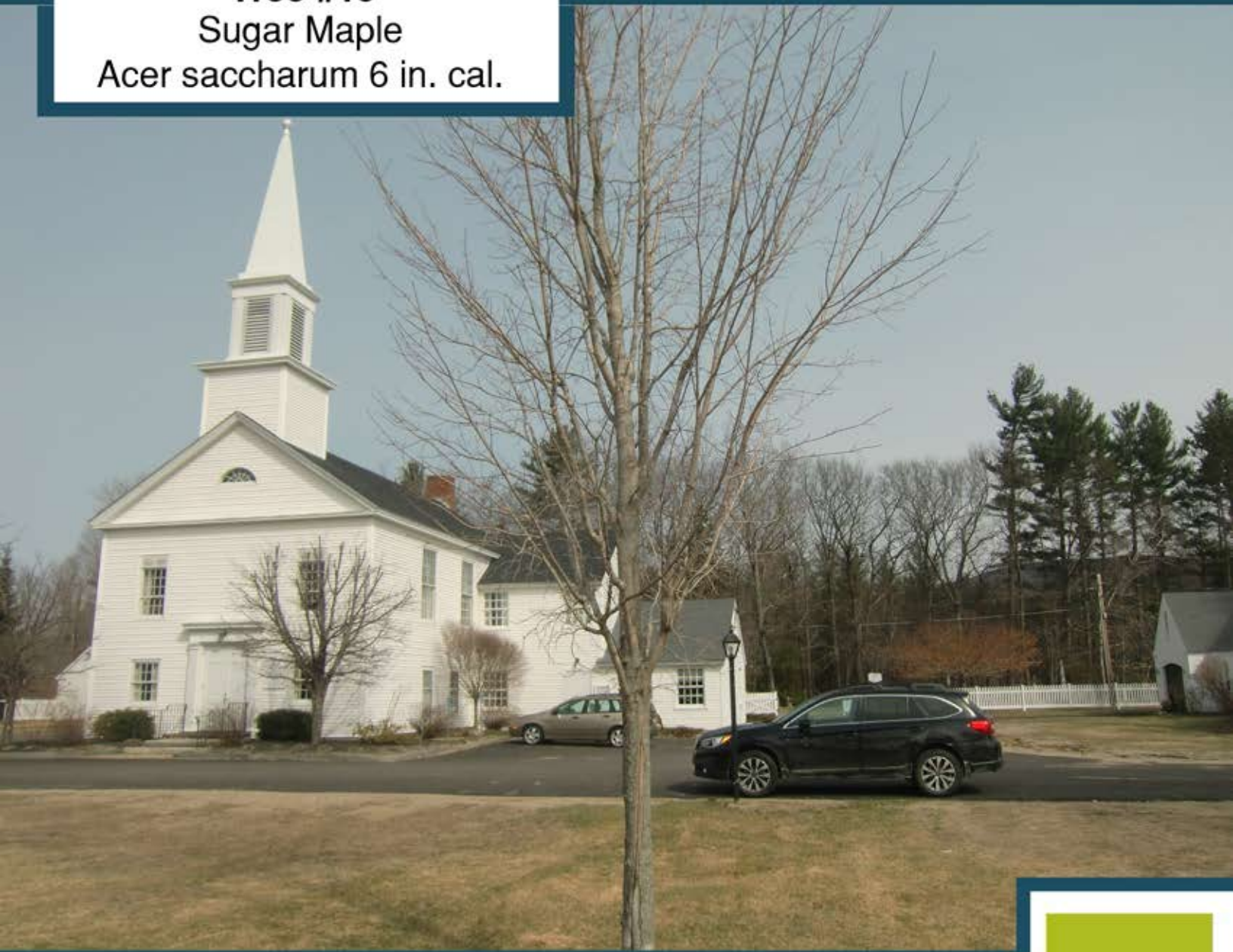
Tree #18a
White Redbud
Cercis canadensis alba 1in.cal.



1. **Conditon** - Good
2. **Save or Remove** - Save
 - a. **If saved what is the treatment plan / pruning needs?**
 - a. Fertilize and Mulch



Tree #19
Sugar Maple
Acer saccharum 6 in. cal.



1. **Condition** - Good there is some lower trunk damage

2. **Save or Remove** - Save

a. **If saved what is the treatment plan / pruning needs?**

- a. Clean out interior branches and potential crossing branches.
Root fertilize the tree and remove the plastic edging from the root area of the tree.



Tree #20
Sugar Maple
Acer saccharum 18 in. cal.



1. **Condition** - Good there is some lower trunk damage

2. **Save or Remove** - Save

a. **If saved what is the treatment plan / pruning needs?**

a. Thin the crown of the tree by a professional arborist, remove crossing branches and root fertilize the tree.



Tree #21
Ash
Fraxinus pennsylvanica



1. Condition - Good there is some lower trunk damage

2. Save or Remove - Save

a. If saved what is the treatment plan / pruning needs?

- a.** Watch out for the Emerald Ash Borer. Remove branches that are lower than six (6) feet above the ground. Remove interior branches on the interior stem. Root fertilize and aerate the soil in the root zone.



Tree #22

No tree to take picture of

1. **Condition** - This tree has already been removed. The tree stump is located directly to the front left of the Library on the interior common

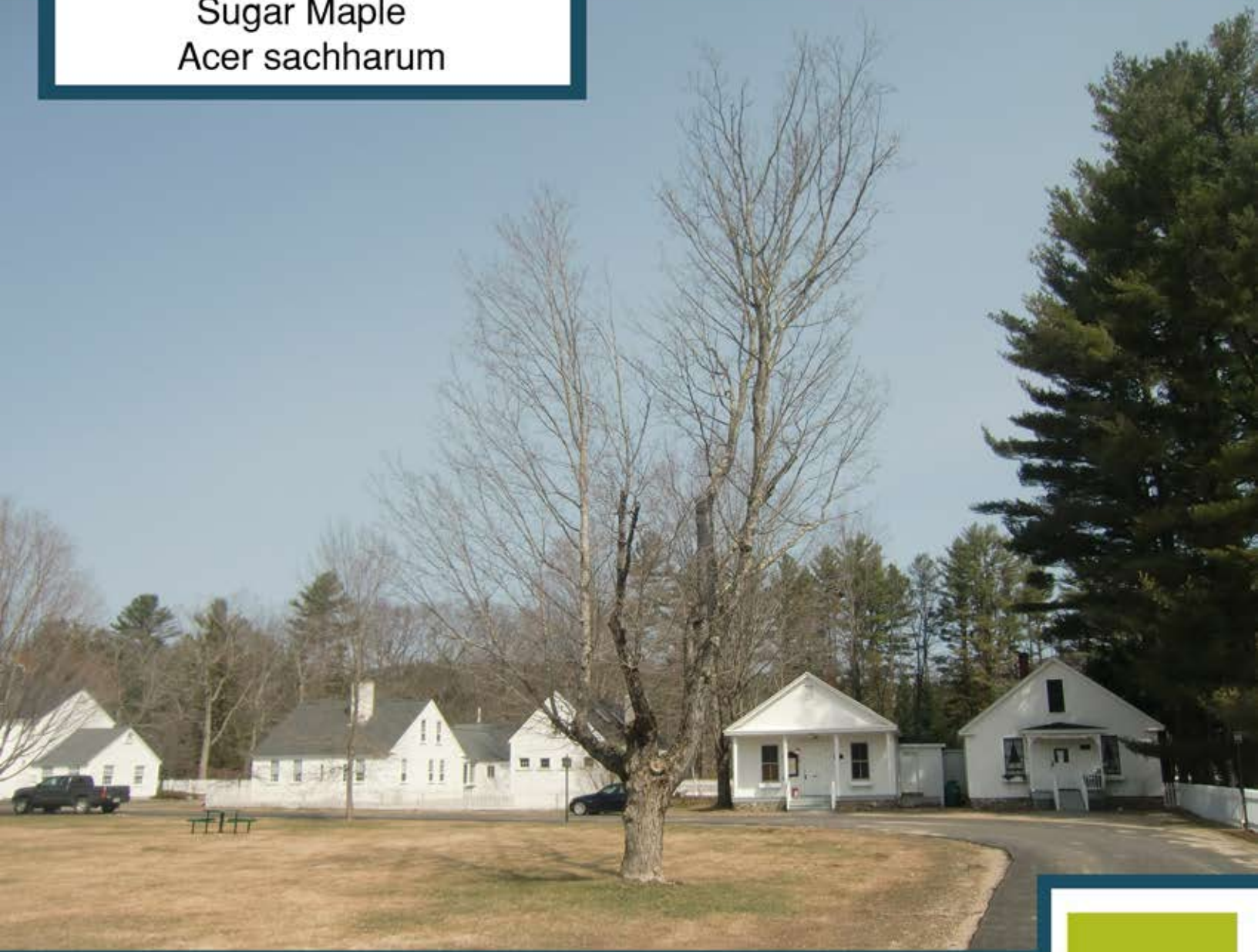
2. **Save or Remove** -

a. **If cut, what is a good replacement and where should it go?**

a. Replace with an Acer rubrum 'October Glory'- October Glory Red Maple



Tree #23
Sugar Maple
Acer sachharum



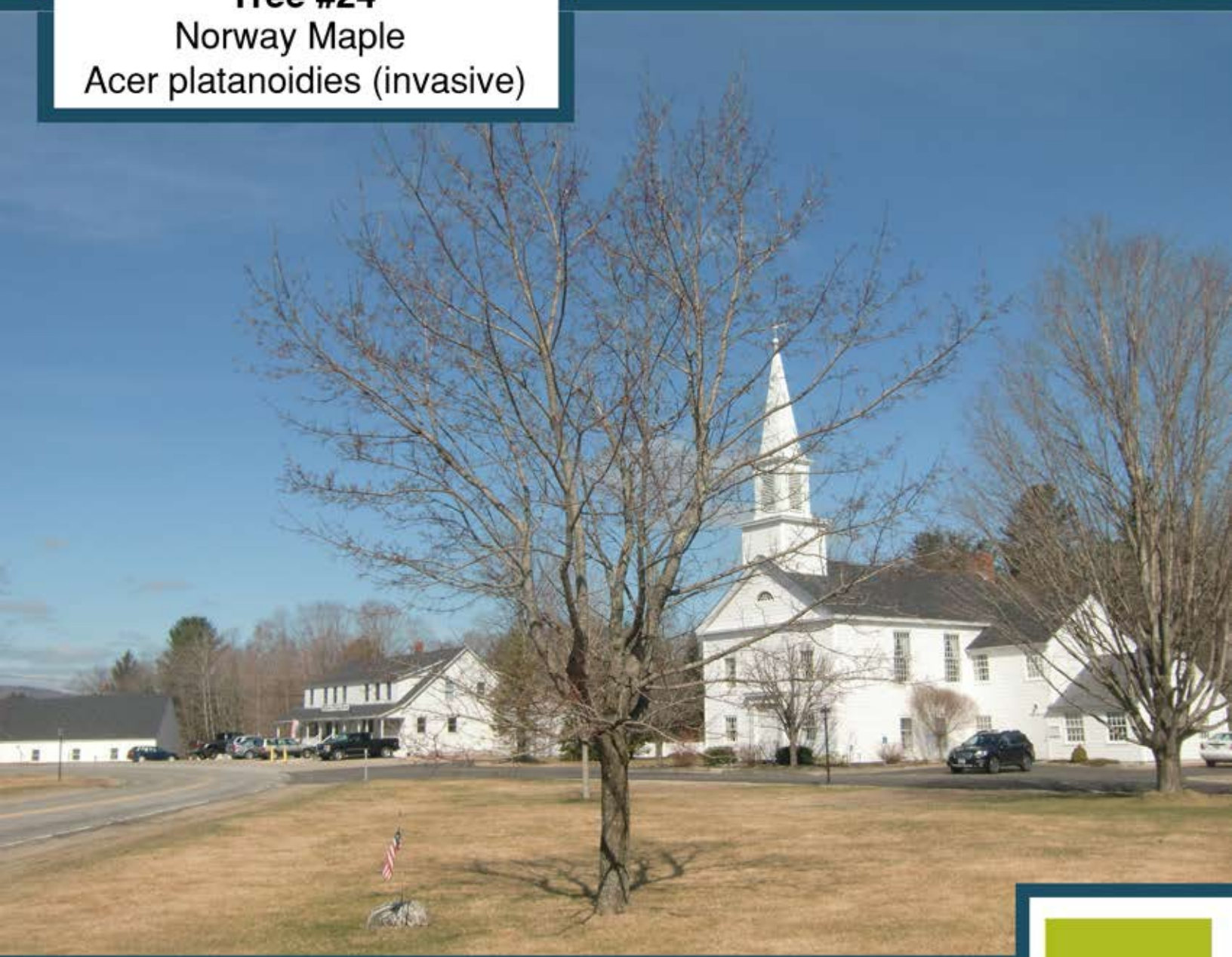
1. Conditon - Fair

2. Save or Remove - Remove

a. If cut, what is a good replacement and where should it go?

- a.** There is substantial dead wood and interior decay in this tree. It is in failure condition and is too expensive to make temporary repairs to salvage it. Replace this tree in the same or near the same location with Sugar Maple 'Legacy' *Acer Saccharum* 'Legacy'

Tree #24
Norway Maple
Acer platanoides (invasive)



1. Condition - Fair

2. Save or Remove - Remove

a. If cut, what is a good replacement and where should it go?

- a. This tree has decay in its main stem. Temporary root fertilizing will extend its life. But should be replaced because it is invasive. Replace with a Red Maple 'October Glory' *Acer rubrum* 'October Glory'



Tree #25
Cluster of common Lilac
Syringa vulgaris



1. Condition - Good

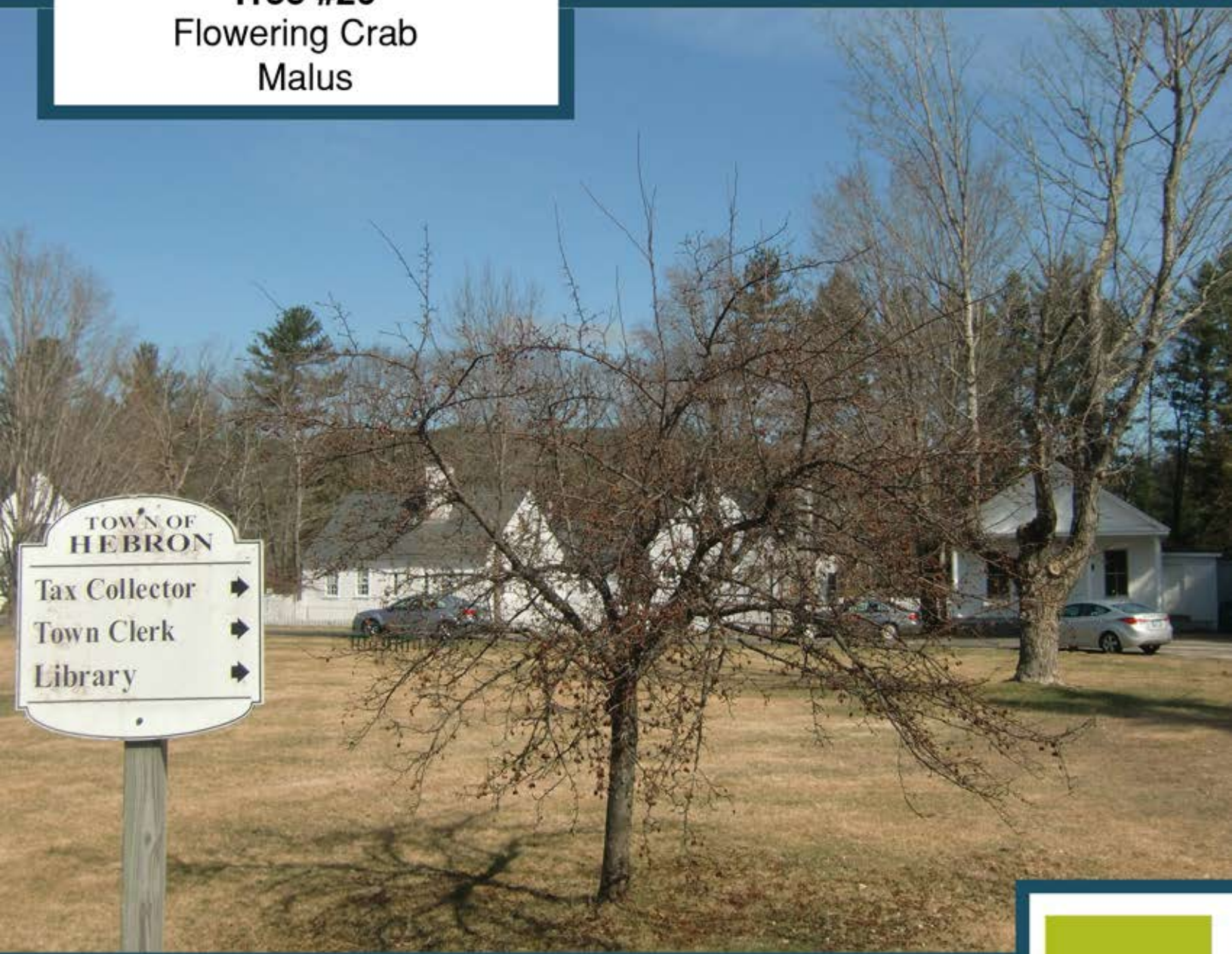
2. Save or Remove - Save

a. If saved what is the treatment plan / pruning needs?

- a. This cluster of lilac seem a little out of place they would be better situated around the "town Clerk" sign as part of a unified planting bed rather than just placed in a random spot on the common. Transplant them as part of a planting bed.



Tree #26
Flowering Crab
Malus



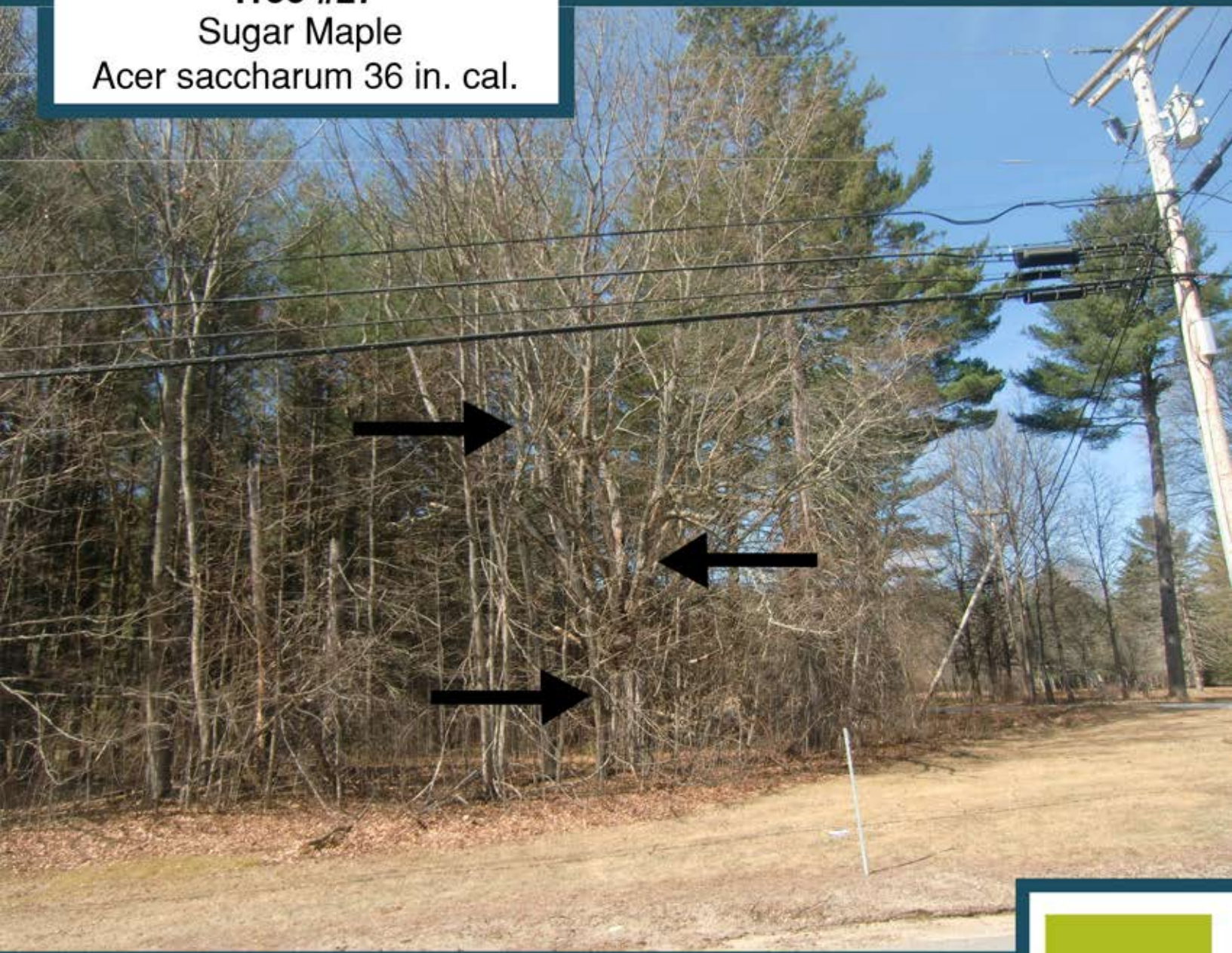
1. Condition - Good

2. Save or Remove - Save

a. If saved what is the treatment plan / pruning needs?

- a. This tree needs substantial pruning. Prune any interior branches and crossing branches. It should be pruned like a standard apple tree would be pruned. Root fertilize and mulch the root zone.

Tree #27
Sugar Maple
Acer saccharum 36 in. cal.



1. Condition - Good

2. Save or Remove - Save

a. If saved what is the treatment plan / pruning needs?

- a. This tree is located behind a lot of secondary growth. Clean out any secondary growth from around it so that it becomes the feature tree in this location. It probably has a fair amount of dead wood that should be cleared out. Just the removal of the competitive secondary growth will do a lot to sustain the life of this tree. It cannot be seen from West Shore Road.



Tree #28
White Spruce
Picea glauca 28 in. cal.



1. Condition - Poor

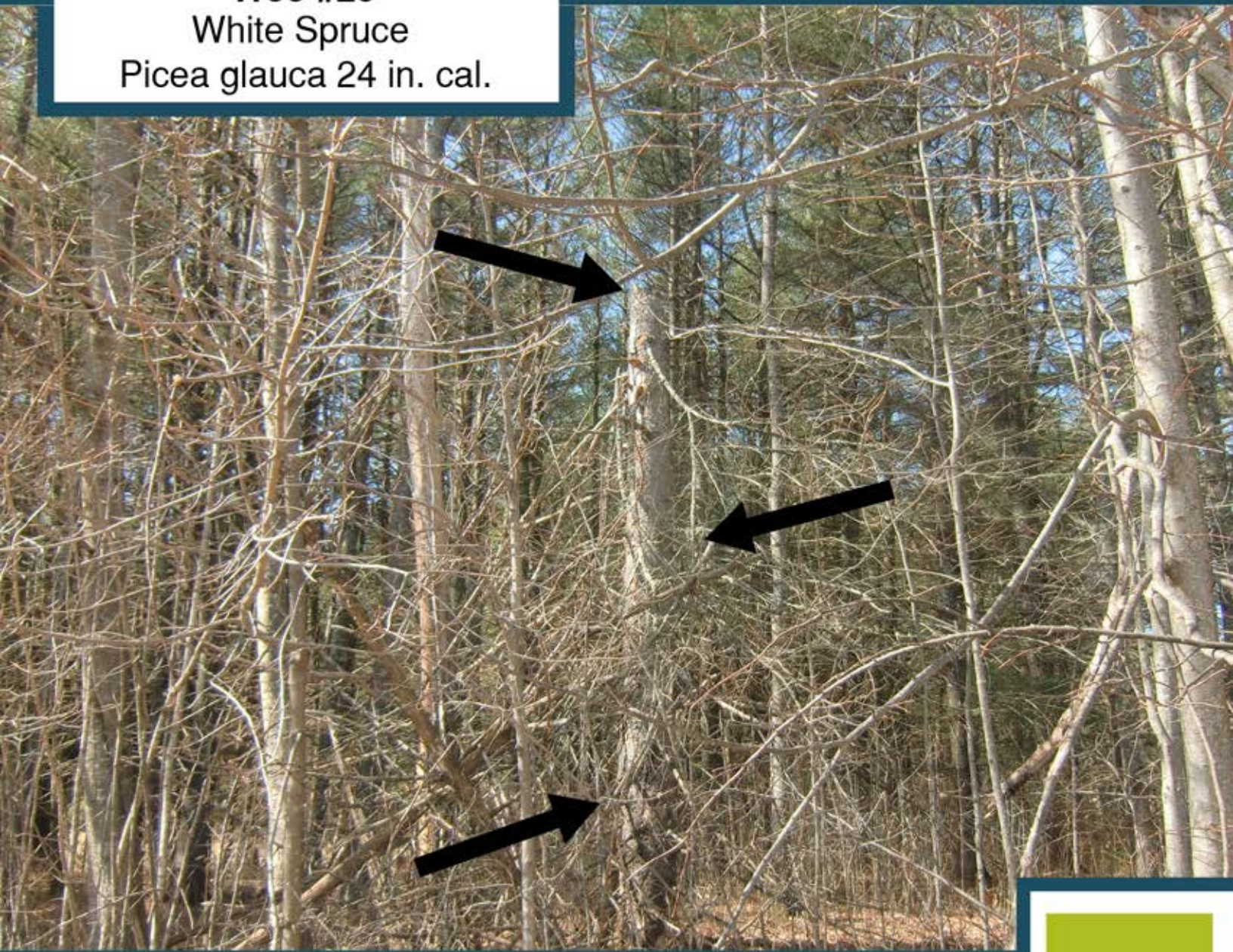
2. Save or Remove - Remove

a. If cut, what is a good replacement and where should it go?

- a. Eventually this tree will fall down on its own under the existing conditions. When time and money allow, then remove the tree. It is behind a substantial amount of secondary growth and is not worth replacing. Unless there is some substantive reason to replace this tree it is recommended that the money saved on this tree be used on the primary portion of the common for larger caliper trees.



Tree #29
White Spruce
Picea glauca 24 in. cal.



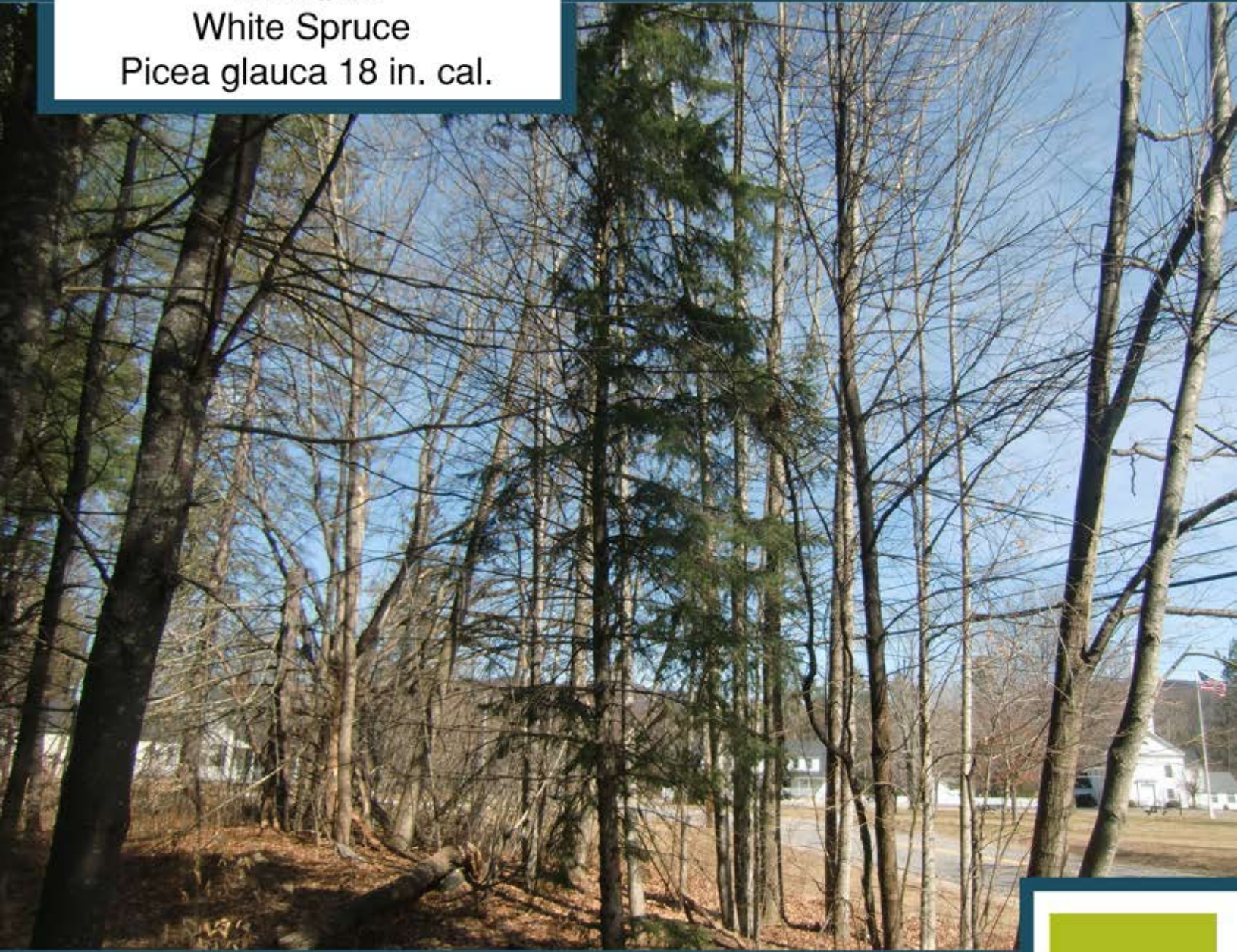
1. Condition - Poor (Dead)

2. Save or Remove - Remove

a. If cut, what is a good replacement and where should it go?

- a. Remove what remains of the tall snag, it is not worth replacing it because it is behind a large amount of secondary growth and cannot be seen from West Shore Road. Unless there is a planned substantive use of this property on the west side of West Shore Road, put the money into planting larger tree on the primary part of the common.

Tree #30
White Spruce
Picea glauca 18 in. cal.



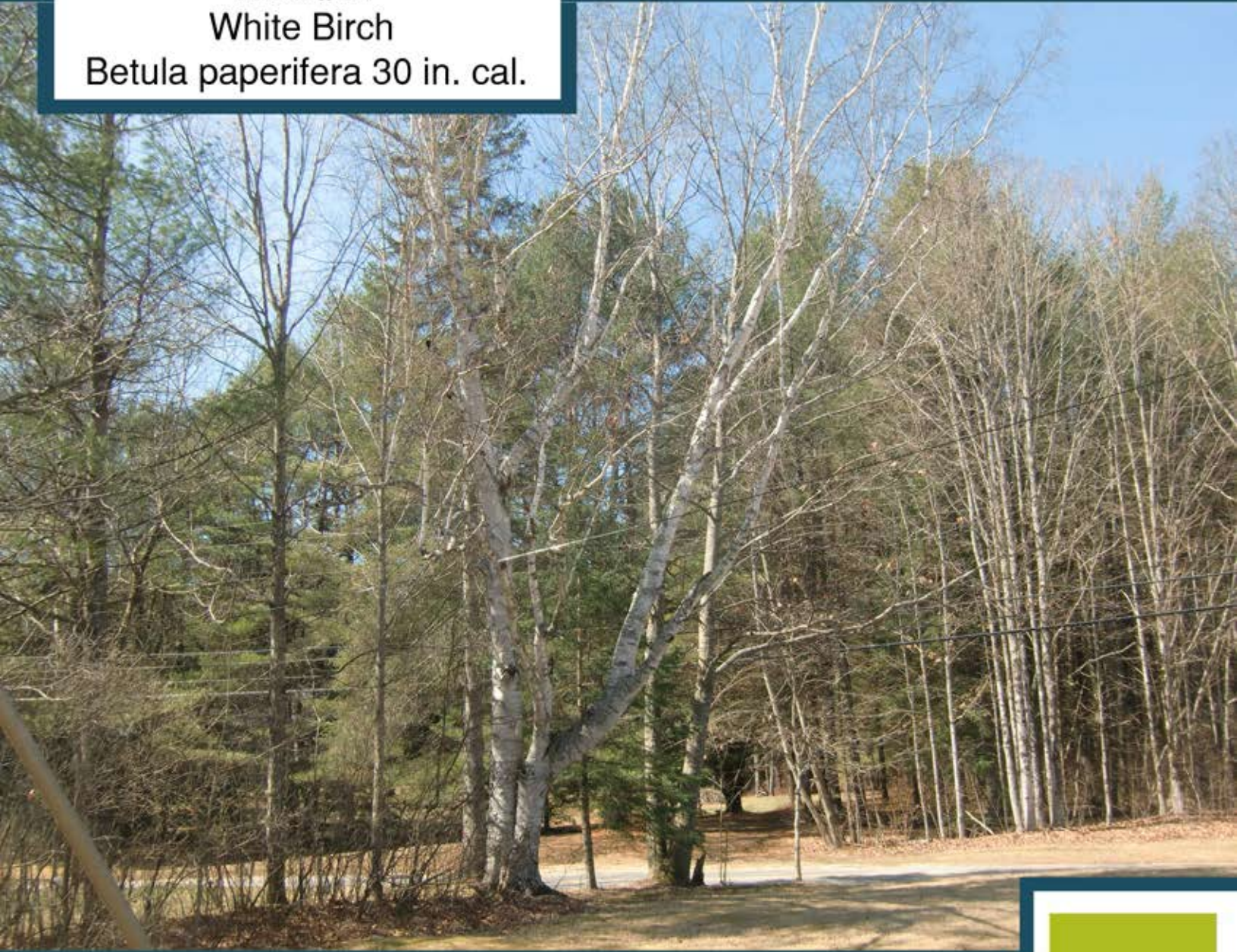
1. Condition - Fair

2. Save or Remove - Leave alone

- a.** This tree has too much competition from other trees that it will eventually die. It is not worth spending time to remove or salvage. Let nature take its course. This tree is not worth putting money into either saving or removing the money could be better spent to plant larger trees on the primary area of the common. Because of the secondary growth this tree cannot be seen from West Shore Road.



Tree #31
White Birch
Betula papyrifera 30 in. cal.



1. Condition - Good

2. Save or Remove - Save

a. If saved what is the treatment plan / pruning needs?

- a. For the time being, this tree is worth saving. Birches are notoriously short lived trees in the world of trees. Eventually in time, it will go into decline and will have to be removed. At this time do some fall pruning to remove the dead wood. Root fertilization and aeration of the soil and some mulching of the root area. Cabling the two stems would be recommended also.



Tree #32
Sugar Maple
Acer saccharum



1. Condition - Excellent

2. Save or Remove - Save

a. If saved what is the treatment plan / pruning needs?

- a. One of the better trees in the common inventory. The crown should be thinned by a professional arborist. The tree should be root fertilized and the root area aerated and mulched. The ground appears to be very compact in this area.

